



BUILDING RELATIONSHIP.....

AKHIL CONSTRICTION

CIVIL ENGINEER CONTRACTOR.....

AN INTRODUCTION.....

- **VALUES:-**
- OPENNESS AND TRUST
- INTEGRITY AND RELIABILITY
- TEAMWORK AND COLLABORATION
- COMMITMENT
- CREATIVITY

- **QUALITY POLICY:-**

Akhil Construction strives to achieve enhanced customer satisfaction by delivering a quality work through timely completion with safe environment. We dedicate ourselves to continual improvement in all fields of our business with good relations to our valuable clients.

- **ABOUT US:-**

Akhil Constructions was established in 2012 to expand of our construction activities into the private sectors. Over a period of time, we have diversified our work in multiple areas .We are engaged in various turnkey projects for construction of Industrials Buildings, Infrastructures work,R.C.C. and Asphalt Roads, Specialized work of preparing Machine Foundations etc...

VISION:-

- **To be a reputed and quality class construction and infrastructure enterprise committed to quality, timely completion, customer satisfaction, continuous learning and enhancement of true values.**

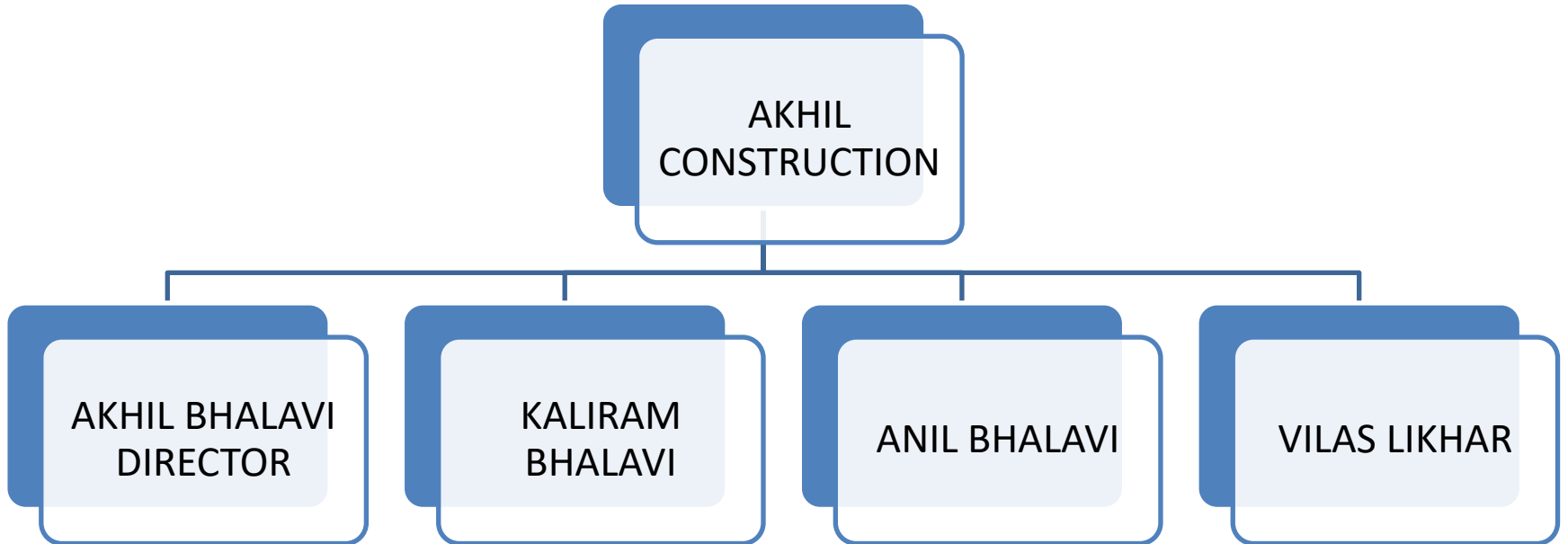
VALUE OF TIME SCHEDULE:-

- **We agree that when someone is spending money & time for the project, then it's our duty to complete that project I time as per given schedules.**
- **We assure you that our adherence to quality and speed will enable us to deliver durable products to the customers within the stipulated cost and in the given time frame.**

MISSION:-

- **To built a strong future ensuring increased returns to our clients and enhanced supports to associates.**
- **To adopt latest technologies in the field of engineering, construction, operations & maintenance of infrastructure project.**

ORGANIZATION CHART



MACHINERIES & TOOLS:-

S.NO	ITEM	QTY	UNIT
1	Universal make RM 800 Mixer Machin		
2	Full Bag Concrete Mixer Machin with Hoper		
3	Full Bag Concrete Mixer Machin out Hoper		
4	Needle Vibrator Diesel and Ele.		
5	Surfae Vibratot		
6	Soil Compactor		
7	Steel Certering Plant 3'0" x 2'0"		
8	Steel Certering Plant 3'0" x 1'6"		
9	Steel Certering Plant 3'0" x 1'3"		
10	Wooden Taka		
11	Dumpy Level with staff		
12	Water Tanker 4000lit		
13	Wooden Rafter		
14	Material Trolly	10	
15	Hand Grinder	5	
16	Steel Cutting Cut-Off Machine	5	
17	Dewatering Mud Pump	1	
18	Sub merrsiable Water Pump	2	

MIRAJ DRY CHEM PVT LTD , UMARI SOUNER(M.H.)



CLIENTELE:-

- OM SHRI SHAKTI PAINTS ,BORGAON (M.P.).
- RAYMOND LTD ,BORAGON (M.P.)
- HIRA POWER AND STEELS LTD,SANGAM(M.P.)
- GHANDHI JINING ,SOUNER (M.H.)
- MIRAJ DRYMIX PVT LTD ,KATNI (M.P.)

ON GOING PROJECT



TURN OVER

S.NO.	FINANCIAL YEAR	AMOUNT
1.	F.Y.2017-18	15.00LACKS
2.	F.Y.2018-19	25.00LACKS

M/S – Akhil Construction

BORGAON ,TAH-SAUSAR ,DISTT-CHHINDWARA (M.P.)480106

Mobile: 91798714829

e-mail : akhilbhalavi48@gmail.com